

SECTION THREE  
VILLAGE OF  
CHEVY CHASE

# News & Views

JULY 2011

## CALENDAR

**WEDNESDAY,  
JULY 13**

Council Meeting  
7:45 p.m. CCUMC Room 109

**THURSDAY, JULY 14**

New Neighbor Barbeque  
6:00 to 8:30 pm

**WEDNESDAY, AUGUST**

Bulk trash pick-up, curbside

No Council Meeting in August

**SATURDAY, AUGUST 6**

Just One Thing! event  
10:00 am to 12:00 noon



## WELCOME NEW NEIGHBORS BARBEQUE ALL AMERICAN WITH A FRENCH TWIST!

Mark Thursday, July 14th on your calendars for our annual Welcome New Neighbors Barbeque. It's always an all American affair, with delicious barbeque by Rocklands Barbeque as our caterers. This year, because the event falls on Bastille Day, we've decided to have a little music to entertain us with the sounds of Steve Albertini playing the concert accordion, with lots of French tunes for all of us to enjoy.

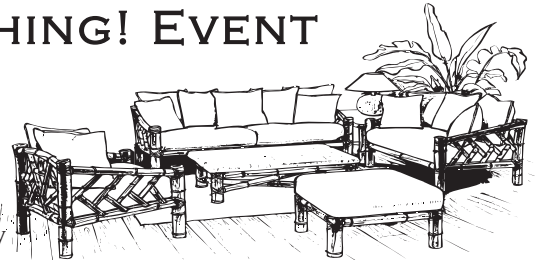
Every year we come together to enjoy good food with neighbors as well as meet the newest neighbors. So plan on joining us! It's guaranteed to be a delicious, fun filled event. Dinner begins at 6:00 p.m. and the event ends at 8:30. Food is served on a first-come first-served basis, so come early and eat hardy!

## JUST ONE THING! EVENT SLATED FOR AUGUST 6TH

We are fortunate in this neighborhood to have so many things—in fact, many of us are choking on our “things.” Next time you clean a closet or are about to throw out something, think if it might be used to help a family who is starting all over again. A Wider Circle is a charity serving families who have been homeless and, with the help of social service agencies, have been relocated into a new home. Rather than move in with just the clothing they have with them, A Wider Circle takes these families to their warehouse and allows them to pick out the items they want and need for their home. The organization then loads up a truck and moves them in, with necessary bedding, tables, chairs, kitchenware...the whole works.

So what can you give? “Just one thing” ...something that has been gently used that would help a family furnish their home, meet an everyday need. A Wider Circle will park its truck at the Gazebo Park on Saturday, August 6th from 10 a.m. to 12 noon. They will then circulate in the neighborhood (by pre-arrangement) to pick up any pieces of gently used furniture, like beds, bedding, chests of drawers, tables, chairs, and larger pieces that you can't carry to the truck.

To make arrangements for pick ups, please contact A Wider Circle no later than August 1. Their number is (301) 608-3504.



## VILLAGE COUNCIL

WWW.CHEVYCHASESECTION3.ORG

**BILL BROWNLEE**

Chairman  
(301) 652-6351  
whbrownlee@aol.com

**CAROLYN GREIS**

Buildings & Roads  
(301) 718-1737  
CAGreis@msn.com

**DONNA HARMON**

Secretary  
(301) 654-9444  
zdharmon@verizon.net

**DAVID**

**OHRENSTEIN**

Treasurer  
(301) 986-8403  
dohrenstein@aol.com

**NATASHA SAIFEE**

Vice Chair  
(240) 497-1889  
natasha.saifee@verizon.net

**ANDY LEON  
HARNEY**

Village Manager  
(301) 656-9117  
(202) 361-3801 cell  
villagemanager@  
chevychasesection3.org

*\*In accordance with the Americans with Disabilities Act and our desire to have our meetings open to everyone in our community, Council meetings are held at the Chevy Chase United Methodist Church which has handicapped elevator access via the parking lot entrance. We are grateful to the Church for their generosity in allowing us to use their facility each month.*



## COUNCIL ACTIONS

---

The Council met on Wednesday, June 8th. The meeting began at 8:15 p.m. with all Council members present.

### PUBLIC SAFETY

Our community policeman on the beat has been working stop sign enforcement and has also helped with traffic control for Brookville Road.

We have had some problems with neighbors taking it upon themselves to paint yellow curbing gray. We believe those issues have been resolved and yellow paint will be re-applied where necessary. If that occurs again, then No Parking signs will be installed.

### BUILDINGS & ROADS

We are waiting for approval by WSSC of the plans for the sanitary sewer for 3821 Bradley Lane and as soon as we receive those plans, we will be granting permission for Pepco and Washington Gas to install their utilities. The developer has been informed of this as we don't want conflicts with the various utilities.

The house at 7104 Florida Stret has gone on the market after a long construction period. Work on trees in Section 3 by Pepco's contractor, Asplundh, will begin shortly. A number of diseased trees on private property will be removed. These trees represent a hazard and might have otherwise taken down a power line in a storm. We have worked with the arborist hired by Pepco to be certain that homeowners understand and agree to the work suggested. When in doubt, we have asked our own arborist to come in and evaluate the same trees to be certain we have the same response.

Carolyn Greis reported that the **Al-Mashagbeh** family has received permits for both their fence and their new walkway and steps. The **Nordlinger** family has received a permit for a rear yard **patio**. The **Larkin** family has received a permit for the dumpster. The **Saifee** family has received two permits, one for the dumpster and one for the repair of their fence.

The Village Manager reported that the construction on Raymond and Georgia in the sidewalk to help with the drainage problem will be completed by the end of June.

### FINANCIAL REPORT

Interest rates continue to be poor. The Council agreed to seek the highest interest rate available from a Maryland chartered FDIC insured institution when current CDs come due.

### COMMUNITY

The Council agreed to hold the Welcome New Neighbors barbeque on July 14th and discussed hiring an accordionist as a fun entertainment to make a nod to the fact that the event falls on Bastille Day. (see story this issue)

The Council agreed to invite A Wider Circle to come into the community for household donations (see story this issue).

The Party in the Park is scheduled for Sunday, September 25th.

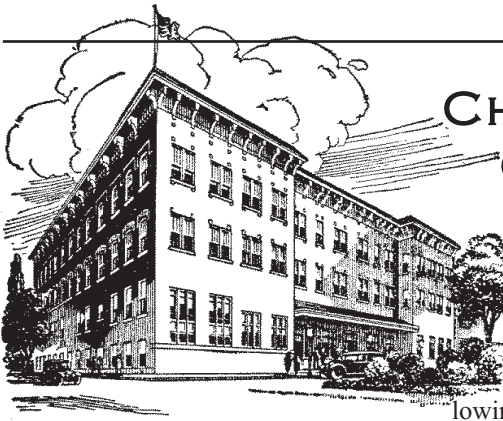
## WHEN DOES BRAC BEGIN; WHAT DOES IT MEAN FOR US?

As you know, all of Walter Reed Army Hospital is moving to the area around NIH and the Naval Medical Hospital as mandated by the BRAC (Base Realignment and Closure) process. By September, approximately 2,500 more personnel will be transferred to the new Walter Reed National Military Medical Center (WRNMMC). There will be a new 345-bed hospital which means patients and their families will also add to the density. Staggered shifts may minimize some of the impact of all the new users of this facility.

We are all anticipating traffic delays and there are improvements being made to "cure" some of those problems, but the timing is a little "off." The actual move takes place this summer and you can see some improvements have been made at Cedar Lane and on Jones Bridge Road and sidewalk near the Naval Medical side of the medical complex which straddles Wisconsin Avenue.

There will be an additional lane from the beltway to Jones Bridge Road carved out by narrowing the median strip however these improvements won't be completed until late 2012. You can already see restrictions on turning from the north- and southbound lanes on Connecticut Avenue into the area where CCRA access has been available for decades. Anyone traveling to CCRA can attest to the difficulty getting to the club during rush hour. And there are improvements on the drawing boards for the Jones Bridge/Connecticut Avenue intersection (documented as the seventh worst intersection in the County)...unfortunately, construction of those improvements is not yet scheduled. It is projected that some of those improvements will be made by December 2013!

In short, while much attention has been paid to the Wisconsin Avenue/Cedar Lane/Jones Bridge Rd. intersections, the work on Connecticut Avenue remains largely on the drawing boards. So hold your hats and we'll soon see the impact this lack of attention to Connecticut Avenue will have on our ability to navigate the primary artery in and out of our community. Efforts are underway to improve public transportation to serve this area and planners have computer models that purport to demonstrate the impact of the increased density, but until we see it, we won't really know the full impact.



## CHEVY CHASE SECTOR PLAN

As you know,

we have been fol-

lowing closely the

development of the Chevy Chase Sector Plan. Section 3 is also a member of the Connecticut Avenue Corridor Coalition, a group of neighborhood organizations and municipalities which will be affected by any development north of us. We now have two “dueling” visions for that area, one presented by the Chevy Chase Land Company and now, the planning board staff has developed their plan based on the workshops they held and the communications they received from those impacted by the sector plan. The results are stunningly different. The Planning Staff is at the beginning of their vision, but it is much more closely tied to what we have heard from Section 3 residents and others concerned about increased densities just to the north of us. To see and hear a presentation from the planning board staff about their plan, go to [www.montgomeryplanning.org/community/chevychaselake/index\\_shtm](http://www.montgomeryplanning.org/community/chevychaselake/index_shtm) or just google Chevy Chase Lake Sector Plan and click on the video presentation by Elza Hisel-McCoy. Over a hundred area residents came to a presentation on Saturday, June 18th where for two hours staff made a presentation and answered questions.

Whereas the Chevy Chase Land Company envisions multiple high-rise buildings, 3,000 residential units and very little open space that is not hardscaped, the Planning staff caps all building heights at 65 feet or maximum 6 stories. Their vision is also tied to the installation of the purple line, but they see development coming in two distinct phases—pre-Purple Line construction and post Purple Line. And finally, they recommend that Connecticut Avenue NOT be made any wider but that traffic control options and increased public transportation to the site be implemented. The vision by the planning board staff, based in large part on your input at various meetings and emails that they received, is a neighborhood center with mixed use development. Because the funding of the Purple Line is still in question, the staff recommends developing the site in two phases, beginning with re-zoning the commercial area to mixed use for the same amount of square footage currently zoned exclusively for commercial. The re-zoning in both phases envisions new parkland, mixed uses of retail, commercial and modest residential uses all in heights ranging from four stories to six stories. Once the Purple Line is under construction, then the second phase would be implemented which would include mixed uses for another 800,000 square feet.

The staff will spend the summer refining their vision, so it's never too late to let them know your thoughts. In September, the planning staff plan will be presented to the Planning Board. The plan that they adopt will then be presented to the County Council. There will be multiple opportunities for hearings and public comment.

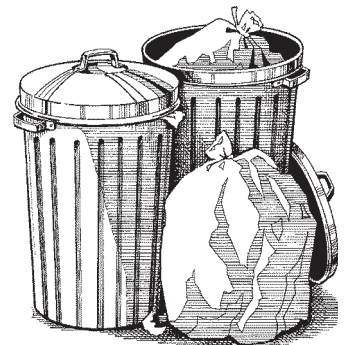
Attendees at the presentation of the staff draft plan on June 18th, expressed concern that the full impact of the BRAC will not be known by the time the staff recommendations are presented to the planning board. And while the attendees were assured that computer models have taken that into account, the fact is, the full impact of the BRAC realignment on this area won't be known until it actually happens (see story page 2).

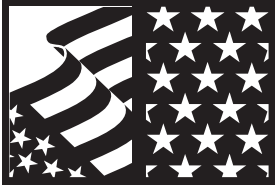
Similarly, there was concern expressed that there might be too much pressure being placed on the public school system. The staff assured the group that they had been meeting with the MCPS chief demographer, our very own Section 3 resident, Bruce Crispell, and that he did not see large numbers of families with children putting the kind of pressure on the system that the Chevy Chase Land Company's vision of 3,000 residential units might place on the same site. Another important consideration is that the Purple Line is a light rail system and will not have the capacity of the current METRO system, so the numbers of commuters will not be the same. There will also have to be shuttle systems set up to bring workers to the new medical center facility from the Purple Line to cut down on commuter traffic, when and if the Purple Line is funded.

We will continue to follow the development of these plans but it's clear that the planning staff envisions a much more low-key, less dense development on the site than does the Chevy Chase Land Company.

### P-U!!

Have you taken a wiff of your trash cans lately? Try emptying them out completely, spray a little Clorox inside and then hose down the inside and let it dry in the sun. That way, it's less attractive to rodents and will make the job of our hard-working trash contractors that much more pleasant on hot, humid summer mornings!

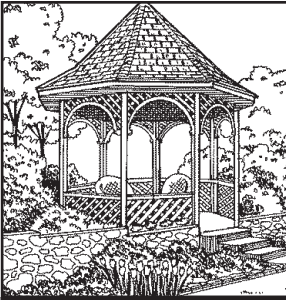




## SECTION 3 VILLAGE OF CHEVY CHASE

P.O. Box 15070

Chevy Chase, MD 20815



SECTION THREE  
VILLAGE OF  
CHEVY CHASE

---

# News & Views

---

JULY 2011

---



## HERBS IN THE PARK

We're trying something new this year... herbs in the park! We've taken a faux oak barrel, filled it with potting soil, and planted herbs for the taking by Section residents. Need a little thyme? Snip off a few sprigs! Need a few snips of basil? We've got it! Try a little tarragon too... just make sure you leave enough for the plant to grow and your neighbor to try some. We don't know how it will work, but we liked the idea of a communal mini-herb garden high enough that we wouldn't be worried about rabbits munching on our "crops". Let us know what you think...it's just getting established and we want to try new things.



## NEWSLETTER YARD SALE

We've all got things we'd like to sell, but putting together the energy for a yard sale is a project on a whole other level of magnitude...advertising on Craig's List means opening your home to strangers...so why not try and recycle "in the family" as it were...by advertising only to Section 3 residents! This is our first "newsletter yard sale" and of course, you can put in an ad anytime you want, but by making a special "yard sale" page, we hope to draw more interested buyers and sellers...so if it works out, we'll try it again later in the year. In the meantime, use your directory to get the email address or phone numbers of the folks advertising. Because this newsletter goes up on the web, we are not including that information in the ads. The rule for this first effort was no more than 10 items from any household, those items could be a grouping (as in children's clothing) or a single thing. So here is the list, in alphabetical order by name last name of the seller.



*Contact: Jan Augustine*

**Dining room set:** 66" x 40" pecan finish, slightly curved ends, contemporary styling seats six with one additional 12" leaves; custom table pad, 6 chairs including 2 arm chairs. Back of chair height is 41" all in good condition. Table carefully disassembled for shipping and storage. Price \$300.

**Dinner Service for 8:** Noritake Apollo (circa 1920)

Eight 5-piece place settings (dinner, salad, bread and butter plates, coffee cup and saucer; two oval vegetable dishes; one 12 5/8" oval platter; one covered sugar bowl; one gravy boat with attached base. Price \$600.

*Contact: Nathan Billig*

**Rosewood veneer bookcase:** 76" high by 42" wide \$100

**Mahogany veneer desk:** 30" x 60" with 4 small drawers and 1 file drawer, locks \$150

**Desk Chair:** with vinyl seat and rosewood arms \$75 (or \$50 with desk)

**Standing Lamp with 3 "bullet lights":** black metal \$50

**Oriental style rug:** 8 x 10 in browns, tans—slightly worn on one edge \$50

**Klimt reproduction prints:** mounted on board \$25

**Wooden armchair:** by Hickory \$250

*Contact: Molly Borders*

**1907 Steinway upright piano:** good condition, original wires, needs tuning \$1200 negotiable

**1975 Karl Hofner 14" viola:** from Bubenreuth, Germany lovely tone, good looking. Comes with a case, two pernambuco bows, and a cloth sack to hold it within the case for additional protection \$450.

*Contact: Audry Carter*

**Ash Bedroom furniture:** for kids rooms. 2 headboards, bureau, bookcase, mirror, 2 desks, 1 desk chair, nightstand \$425.

**Girl's Huffy 15 speed bike:** purple, like new \$45

**Formal table (36 x 36 approx):** with insert for backgammon and chess/checkers with 2 occasional chairs \$125.

**Dining room Table with 6 chairs:** \$225

**Living Room Chair (olive):** \$45

**Living Room Chair with wooden arms (red):** \$35

*Contact: Judy Corbett*

**Pottery Barn White Kid's Entertainment Center:** includes two 2-piece units @ \$60 per unit. Each unit consists of 3 shelf bookcases, 45" tall by 30" wide by 13" deep and a smaller shelf with 2 dividers 13" tall by 41" wide by 12" deep \$120

**Amish Rocker:** beautiful, handcrafted in solid cherry \$195

**Volleyball Net, poles and ball:** \$20

**Table Lamp:** made from antique wagon wheel hub \$35

**Large Unframed Mirror:** 4' x 4.5' \$10

**Wedding Dress:** Gorgeous, full length sleeveless, appliqués white on white, silk organza with train, size 10 \$100

*Contact: Mario D'Ambrosio*

**Stealth Bike Carrier:** 3 bike capacity, strap-on style, fits minivans, SUVs, hatchbacks, new \$100, sell for \$50

**Xport Bike Carrier:** 3 bike capacity, strap-on style, trunk mount for regular cars/sedans \$60 new, sell for \$30



*Contact: Tracey Franze*

**Girl's Bike:** Purple, 12" \$20

**Kettler Scooter:** Blue 2 wheel \$15

**Kettler Scooter:** red 3 wheel \$15

**Kettler Tricycle:** red \$10

**Topeak Baby Seat:** Yellow, used twice \$30

*Contact: Andy Leon Harney*

**Elliptical Trainer:** barely used (sadly) Modells new \$300 sell \$100 or best offer

**Victorian Golden Oak Dresser:** approx 21" deep, 5' x long by 30" high Three drawers high—two on top level, two deeper drawers the full width of the piece, drawers, great brass hardware \$200

**Victorian "Eastlake style" marble-topped Table:** white marble top, carved legs \$150

**Duncan Phyfe Dining Room Table:** Elegant 6' table with two 2' leaves in walnut finish with a decorative banding around the edges. Originally \$8,000 for sale, in excellent condition for \$350.

**Marble Coffee Table/Bench:** Greek key pattern on white marble table with brass legs 5' long, 15" wide, elegant, in excellent condition \$150.

*Contact: Krista Meisel*

**Amana side-by-side Refrigerator/freezer:** with icemaker, water \$20 cu. Ft. white, good condition \$100

**Sony Trinitron TV:** \$32" works great \$40

**Armoire:** from Storehouse, fits Sony Trinitron perfectly. Brown wood, sturdy, shelves for audio/video equipment, good condition \$250

**Stairmaster:** works well \$50

*Contact: Laura and Ric Narvaiz*

**Tiger maple cabinet:** Gorgeous refinished French antique base cabinet with top drawer and brass handles. Perfect size for a powder room vanity. 33" wide by 32" high and 16" deep \$1,000 or best offer

*Contact: Marion Robertson*

**Magnifier lamp with floor stand:** good for reading or fine needlework \$99

**Nancy Hoke painting:** Peacock/warthog/heart painting Mostly turquoise \$149

**Ikea sheepskin rug:** great on bare feet \$10

**Twin Beds:** 2 spindle style 1930's no mattresses free—come and get it!

**Misc fabric:** Lots of no less than 3 yards: \$1 a yard

**Hide-a-bed:** double bed size, burnt orange fabric free—come and get it!

*Elena Vejarano (contact village mgr. for phone number)*

**Arch back couch:** in Toile, 90" x 24" \$400

**China Cabinet:** \$400

**Buffet Side Table with Four Cabinets and Hidden Drawers:** \$500

**Mini-Buffer that coordinates with above:** two cabinets, top folds out for bar/serving \$400

**Ironman Legacy Treadmill:** Scarcely used, LCD tv, folds up \$400

**New TiVo, never used:** make offer