

GALERIE
L I V I N G



COMMUNITY THREE

Town of Chevy Chase • February 17, 2022

WHO IS REDEVELOPING THE SITE?

GALERIE
L I V I N G

Leading Senior Health Sustainability
Community Developer, Manager, and Owner

+



COMMUNITY THREE

DC-based Full-service Real Estate
Development Expert

Engineer



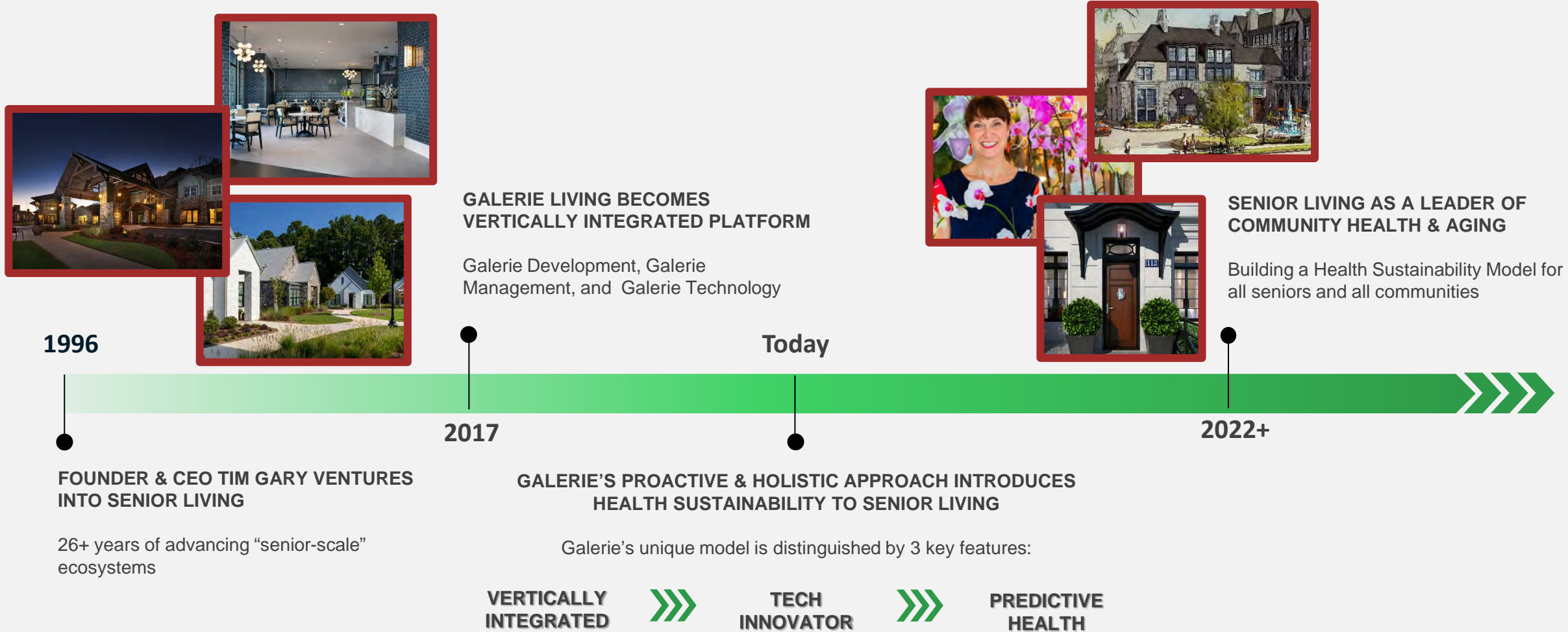
Legal



Architect

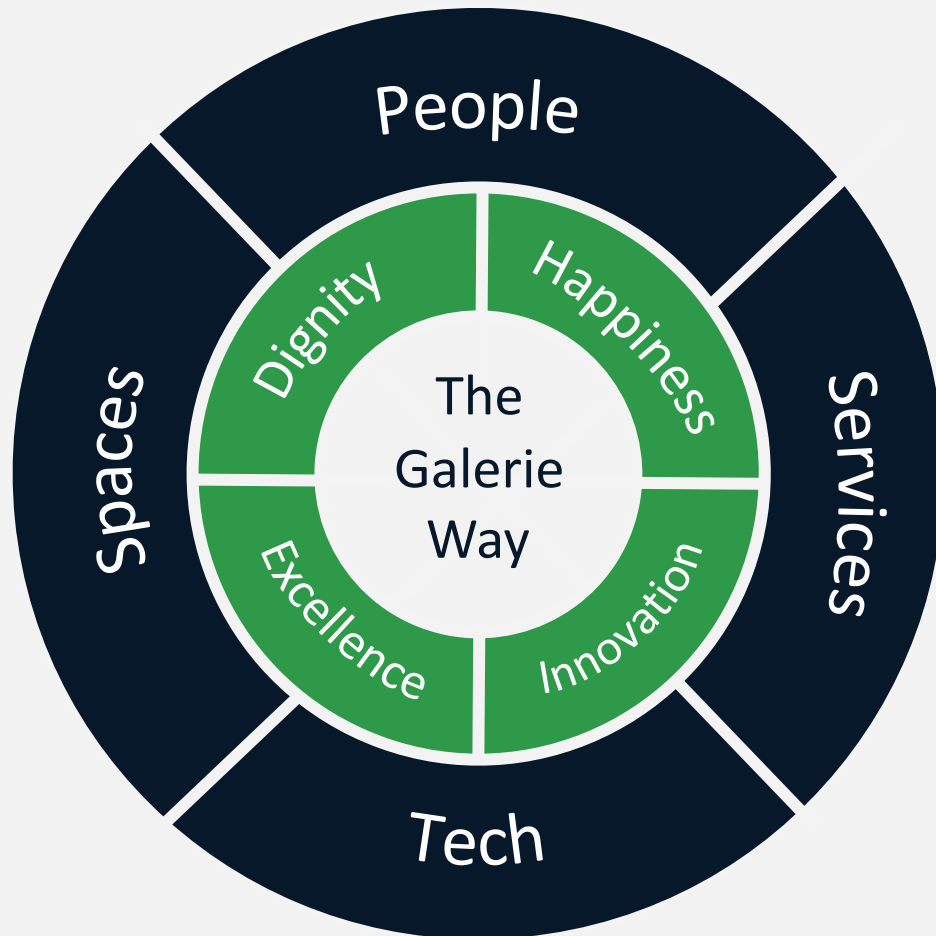


WHO IS GALERIE LIVING AND WHAT IS THEIR VISION FOR COMMUNITY HEALTH ECOSYSTEMS?



WHAT GUIDES GALERIE'S VISION FOR COMMUNITY DEVELOPMENT?

Building blocks and guiding values critical to building Health Sustainability Communities:



WHAT DOES A HEALTH SUSTAINABILITY COMMUNITY LOOK LIKE?

Shaped by community values to support community needs

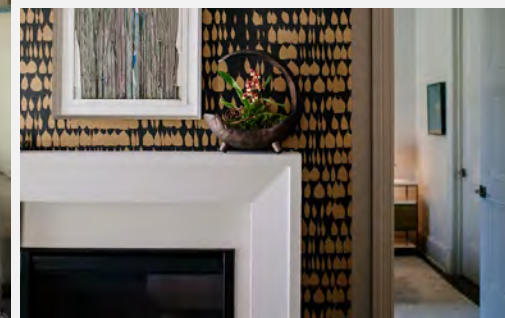
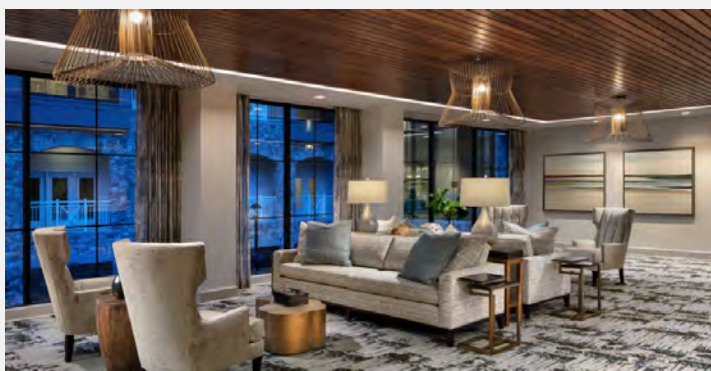
- Example: Dignity

4 Foundational Components of of Health Sustainability Communities:

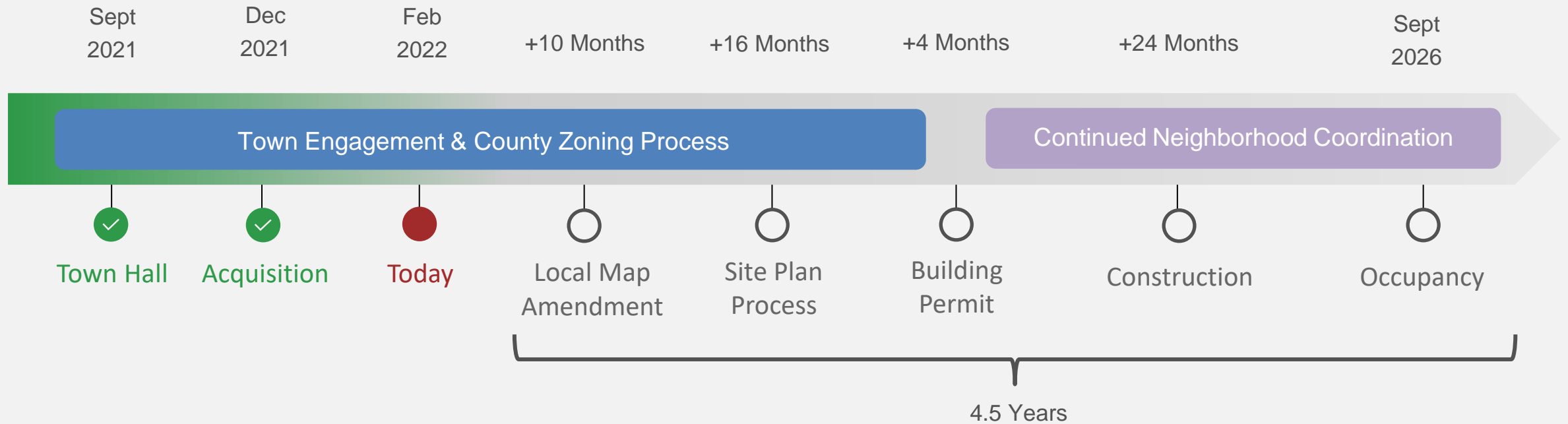
- Space
- Service
- Tech
- People



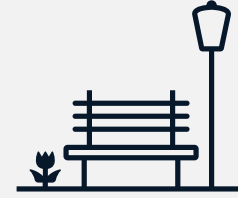
WHAT ARE EXAMPLES OF EXISTING GALERIE COMMUNITIES & HOW DO THEY REFLECT THEIR SURROUNDING NEIGHBORHOODS?



WHAT IS THE PROJECT TIMELINE?



WHAT HAS THE TOWN OF CHEVY CHASE IDENTIFIED AS ITS TOP PRIORITIES?



Traffic Management

Avoid introducing traffic cut-throughs

Primary ingress/egress on Connecticut Avenue

Forest Conservation

Preservation of existing tree canopy

Forest walking path on west side of campus

Recreational Amenities

Add shared community recreational amenities

Open Space

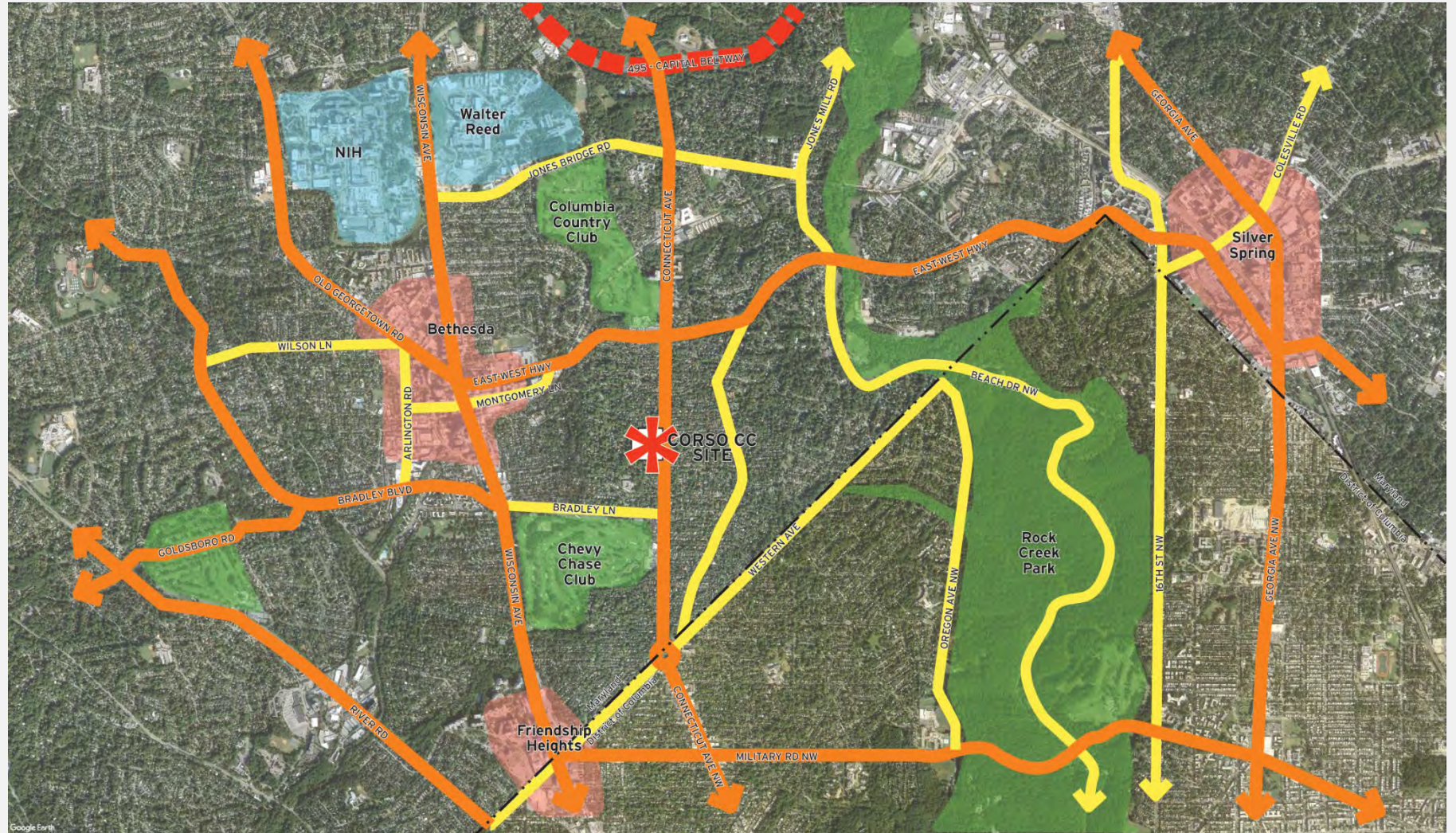
Maintain open space

Utilize open space as a shared community asset

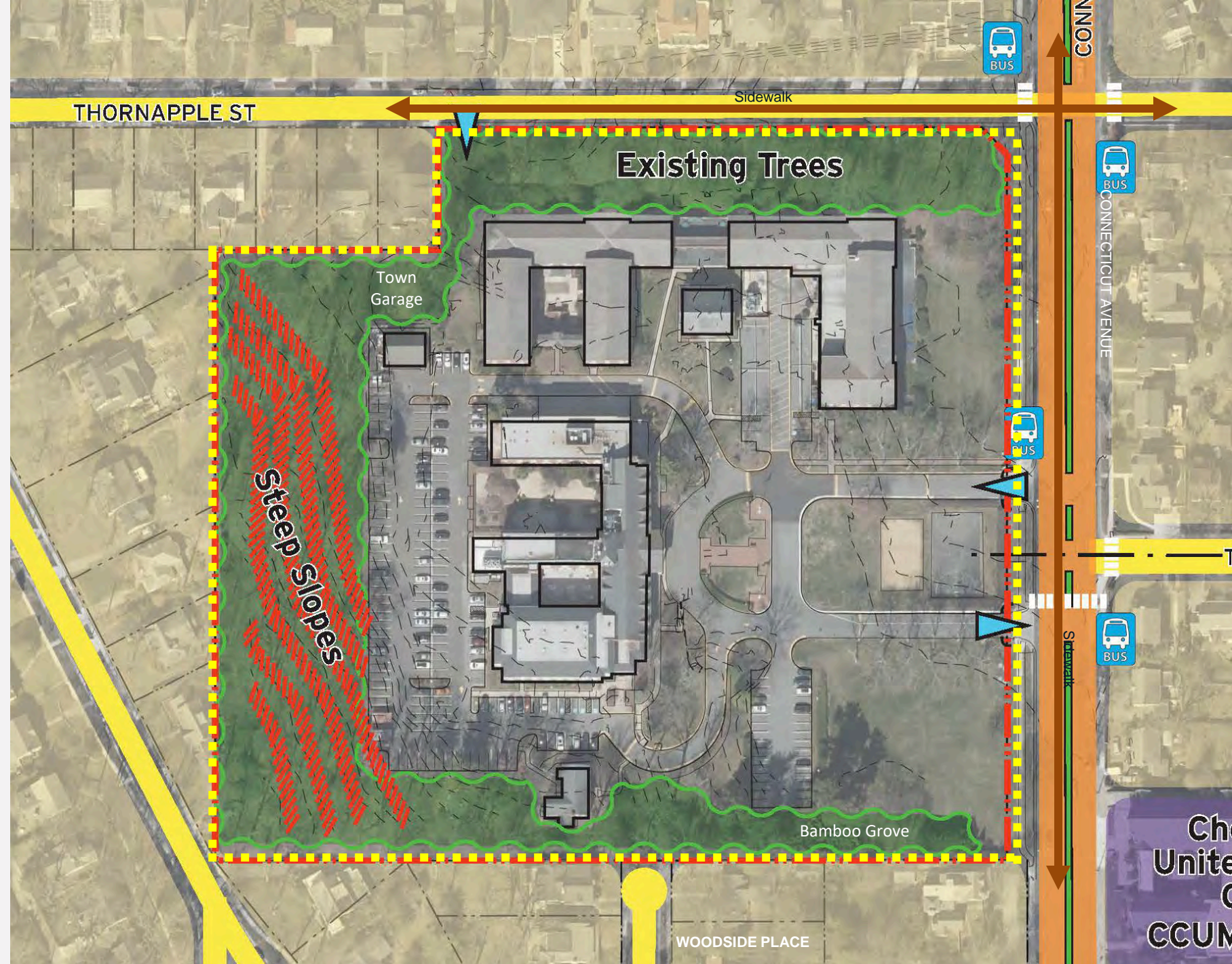
*Summary of 9/30/21
Letter*

HOW DOES THE REDEVELOPMENT FIT INTO THE REGION?

Infill location with
existing infrastructure



EXISTING CONDITIONS PLAN



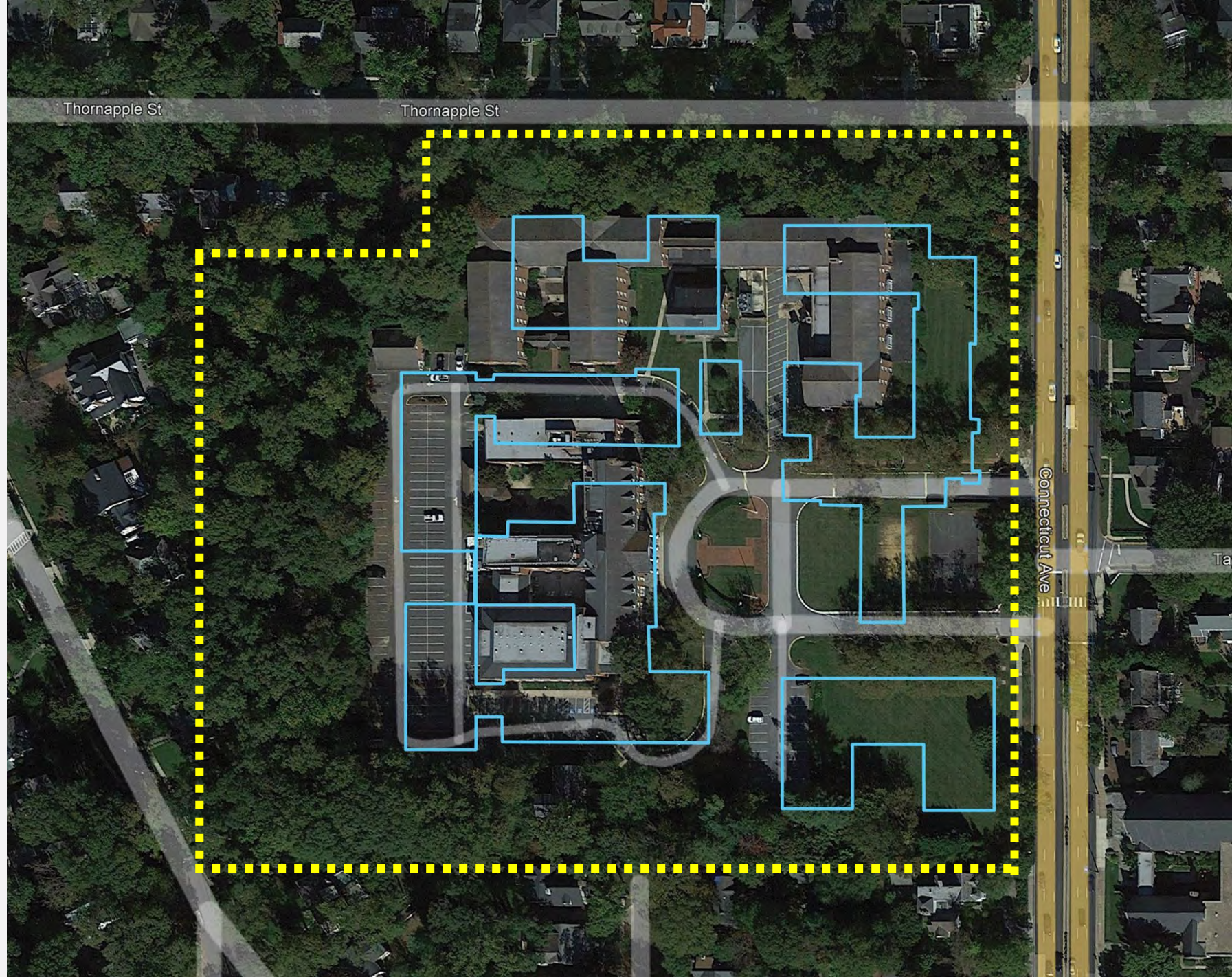
SITE PLAN



OPEN SPACE PLAN



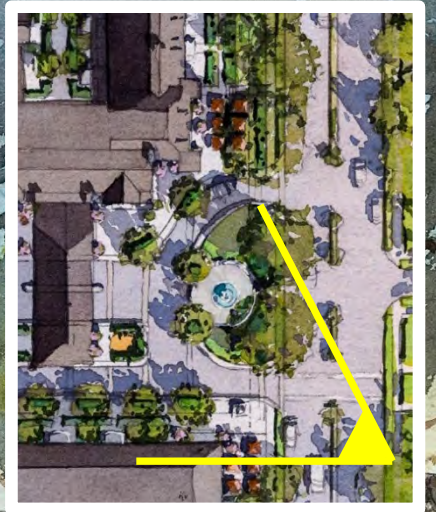
EXISTING TREE CANOPY PRESERVATION



CHARACTER AND STYLE PRECEDENTS



VIEW FROM CONNECTICUT AVENUE



VIEW OF CENTRAL PLAZA





GALERIE
L I V I N G



COMMUNITY THREE

Thank you, Town of Chevy Chase.